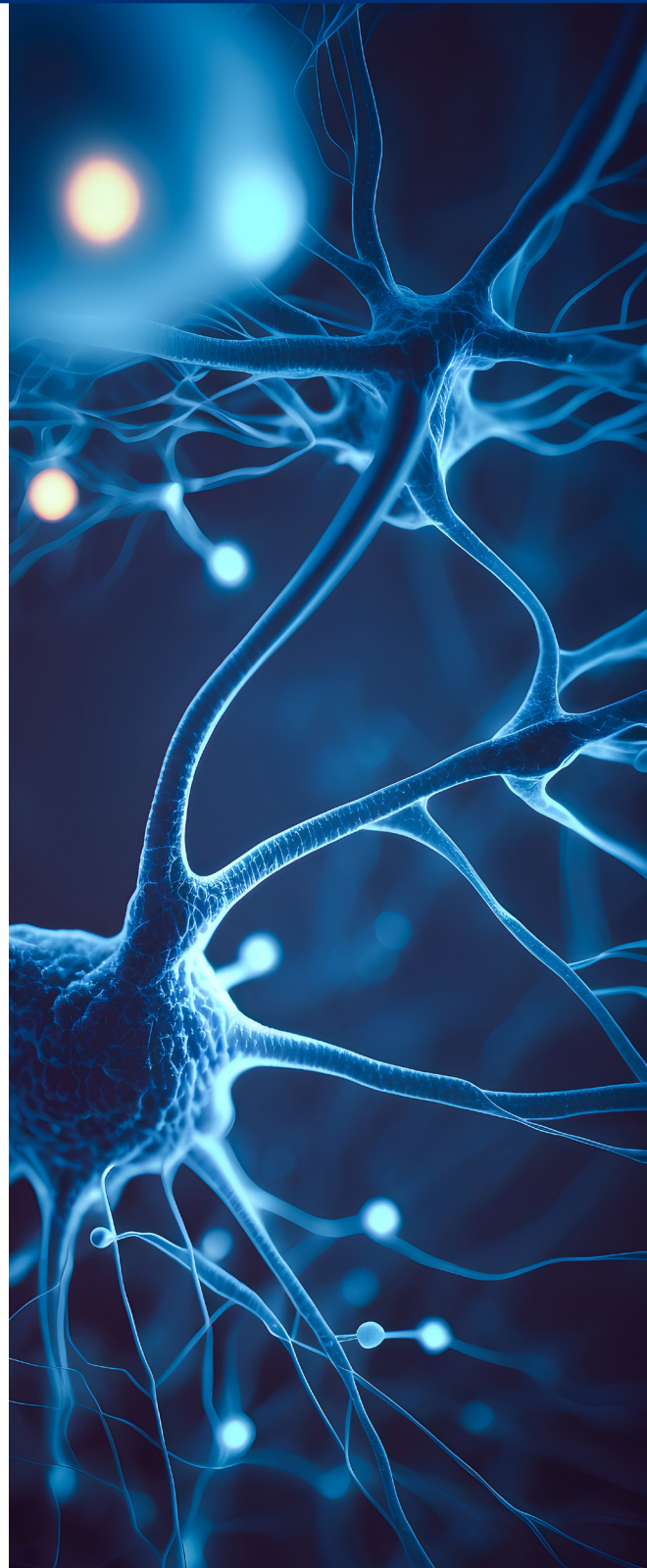


Advice sheets for common neurological conditions and symptoms in primary care

These advice sheets address common neurological symptoms and conditions, which frequently present in primary care, and have been developed as an additional support to Active Clinical Referral Triage (ACRT). We recommend that they are made available locally for GPs/primary care practitioners to access directly (i.e. sitting on RefHelp or equivalent).

They are not intended to replace consultations, but in carefully vetted scenarios may act as an addition to a bespoke “Advice Only” letter in response to primary care requests. They are not intended as definitive treatment pathways and every case should be assessed individually, with any advice provided to be specifically tailored.

We hope the advice sheets are a helpful addition in improving the care of people with neurological conditions.



For more information contact: gjnh.cfsdmpppsac@nhs.scot